

Generation 4 Displays

21-3 Software



JOHN DEERE

Software Update

Package	Version
Generation 4 OS	10.21.2144-121
AMS Applications	10.21.2144-121

Generation 4 OS installation time: Approximately 20 minutes, with no existing data. Installation time will vary depending on the amount of existing data and the software version currently on the display. The latest packages for the Generation 4 Displays can be downloaded and installed over-the-air or using a USB drive and John Deere Software Manager. Reference “Software Installation Instructions” in Software Updates section of the Stellar Support website for more information.

Over-the-air reprogramming -

https://youtu.be/XSG7O3_9KGI?list=PL1KGsSJ4CWk4fhvFOaBZz261XGwPfXvqk

Machine Application Software Updates

Machine applications are located under Machine Settings in the Generation 4 Display menu. A John Deere dealer will be required to install any required updates to machine application software using Service ADVISOR™.

Other Controller Software Updates

Software for the controllers listed below can be updated using the Generation 4 Display.

Controller
Application Controller 1100
Application Controller 1100 (S.N. PCXL01C201000-)
Application Controller 1120
Application Controller 1120 (S.N. PCXL02C201000-)
AutoTrac™ Universal 100
AutoTrac™ Universal 200
AutoTrac™ Universal 300
GreenStar™ Rate Controller Dry
GreenStar™ Rate Controller
StarFire™ 3000 Receiver
StarFire™ 6000 Receiver
AutoTrac™ Vision Guidance Camera

New Features and Improvements

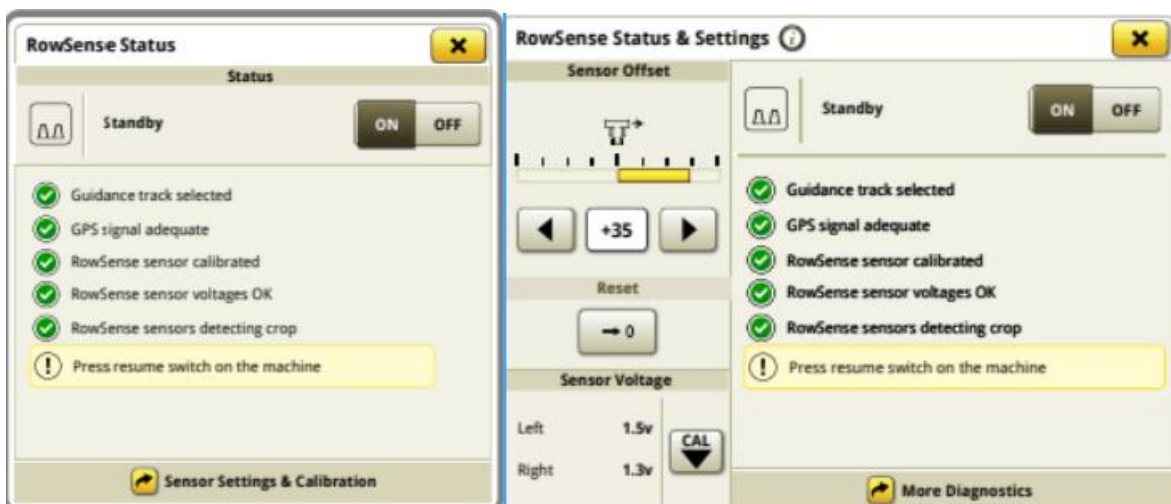
AutoTrac™ Turn Automation –

- Map message “Speed Limited – Increase Set Speed” will appear in the event the machine speed is limited by current set-speed. This will inform the user to increase set-speed to allow machine to drive faster based on the commanded speed.



AutoTrac™ RowSense™–

- Added the ability to toggle RowSense™ ON/OFF from the RowSense™ Status and Settings Page. This can also be turned on from the Guidance Settings Page.



Universal Display Compatibility –

- 4640 Universal Display now supports 4710, 4720, and 4920 Sprayers and Spreaders. Machine detection, Mapping, Section Control, Work Totals and Original Greenstar™ Monitor (OGM) emulator are available.

Work Setup –

- Work Summary interface for Sugar Cane Harvesters has been updated. Crop Type, Variety, and Harvest Units will be seen. Crop Type will default to “Sugarcane.”

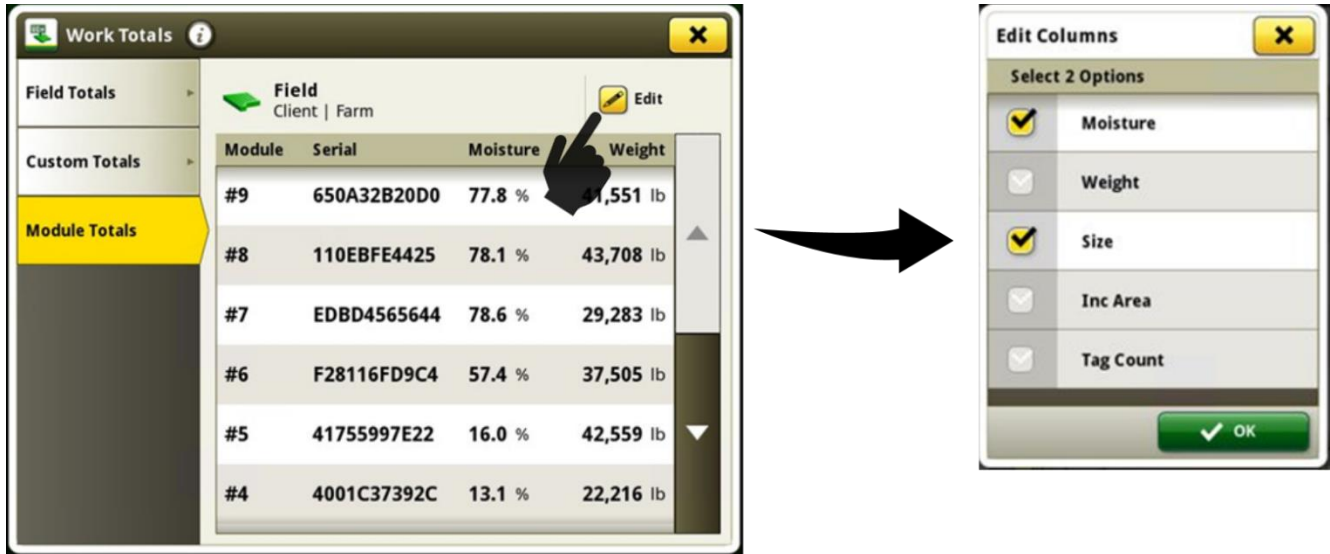
Mapping –

- Spray Pressure map layer is available for all John Deere sprayers with a 4600 display as well as model year 2013 – 2017 4 series and 4240 with a 4640 Universal display.



Work Totals –

- Module Totals is now configurable allowing users to view additional module parameters. Four parameters can be viewed at a time. Module Number and Serial Number will always be present, therefore two parameters out of the following can be selected: Moisture, Weight, Size, Incremental Area, and Tag Count.



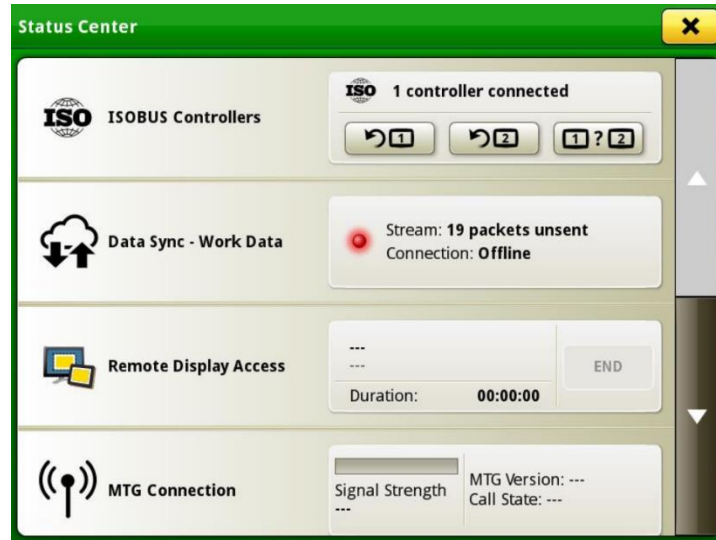
The selected parameters will also appear on the Module Totals run page module.



Note: Configurable Module Totals is only available on CP770 machines with HID Cotton Pro.

ISOBUS VT -

- If using an ISOBUS universal run page module a button has been added to Status Center allowing the user to reset the ISOBUS selection list. This functionality has been implemented to reset the previous VT selection without requiring an implement disconnect.



ISOBUS Task Controller -

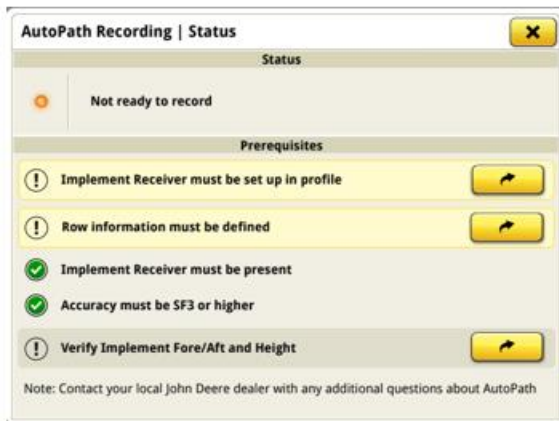
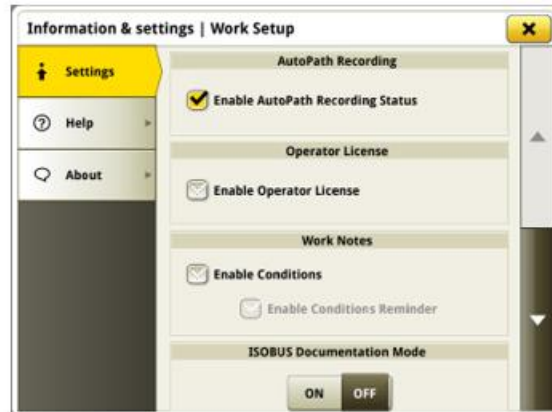
- Multiple Task Controllers are now supported if connected via a rear connection. An ISOBUS implement capable of planting and fertilizing simultaneously that utilizes multiple controllers is an example configuration.

Work Planner -

- A new filter has been introduced which allows to filter via Operator and Farm
- Implements with multiple Operations are now supported. If a work plan with multiple operations has been created products or varieties can be assigned in Work Planner.

AutoPath™ -

- AutoPath™ Recording Status will be shown in Work Setup Application page. This will indicate if prerequisites are met to enable source operation recording of AutoPath™ data. If not ready to record a status page will indicate what the issue may be and allow users to correct it.
- Users must independently verify Implement Receiver Fore/Aft and Height using the quick link from the status page to ISOBUS VT.
- Feature is off by default, and can be turned on via Info & Settings page.



Resolved Issues

The following issues are fixed in software update 10.21.2144-121:

General (May Apply to Multiple Field Operations)

- AB curves do not generate or experience a large shift after importing
- While AutoTrac™ is engaged setup files could not be imported via USB or WDT
- AutoPath™ off by a row when using RowSense during harvest
- AutoPath™ slow loading times
- Crash occurs while recording, swapping, or changing tracks
- Section Control unavailable for ISOBUS implements with operation type “Harvest” or “Swathing”
- “Missing a valid numeric Rate Column” error is seen when importing a prescription (Rx) with characters such as: à, è, й, Ç on a 4240 display.
- Gen4 display is sluggish while harvesting
- Missing JDLink™ measurement machine data
- Machines appear incorrectly during multi machine calibration in Field Analyzer
- Shortcut bar is missing on combines
- Inability to use In Field Data Sharing – “Cannot Find Workgroup” error on display

Additional Information and Training Resources

Operators Manual

A copy of the Generation 4 display operators manual is available within the Help Center application on the display with Generation 4 OS software version 10.16.1400-85 and newer. This content is updated with software updates as needed. Always read the latest operators manual prior to operation. To obtain a copy of the operator's manual, see your dealer or visit techpubs.deere.com.

Onscreen Help

Onscreen help supplements the information found in the Operator's Manual. The onscreen help can be referenced by opening the Help Center application on the display or by pressing the Information icon at the top of any page to view relevant help information for that page. Generation 4 Display Onscreen Help is also available for reference at displaysimulator.deere.com.

Training Simulators

To learn more about the Generation 4 Displays, there is an online training simulator available at displaysimulator.deere.com

Release Notice

These are Generation 4 OS and AMS Applications software update release notes for the Generation 4 Displays. Release notes can be found on www.stellarsupport.com. Note: Your use of the software is governed by the End User License Agreement included with the software.

Copyright © 1996-2022 Deere & Company